

WALL PACK FIXTURE

MFHID-WP

Application

Parking areas, entrances, walkways, underpasses, loading docks, or recreation areas.

Construction

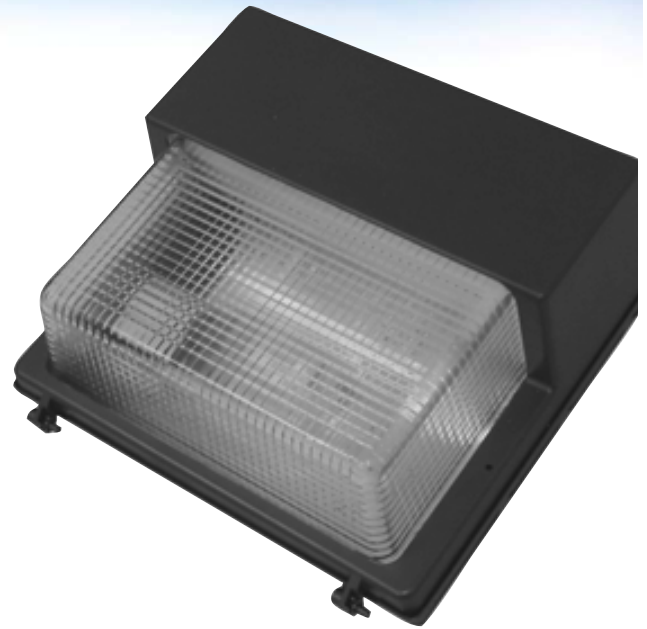
Body: Heavy duty die-cast aluminum housing with high impact/heat resistant borosilicate glass for ultimate light distribution.

Lens: Borosilicate glass is hinged and removable. Silicone rubber seal to prevent leakage from outside.

Reflector: One piece anodized aluminum designed reflector for best light efficiency.

Finish: Powder coated dark Architectural Bronze color.

Connections: 1/2" tapped holes available for installing photocell (photocell optional)



Electrical

UL listed wire rated for required temperature and voltage. Lamps is secured with Mogul Base.

Warranty

One year standard warranty on fixture. Ballast carries 3-5 year manufacture warranty.

Options

Sensors. (See available options)

Features

- Dark Architectural Bronze body color
- Total Luminaire Efficiency: 63.8%
- UL Listed for Wet Locations
- Spacing Criteria 0-Deg: 1.76, 90-Deg: 1.3
- Factory supplied lamps are available in various CRI ratings, temperature colors and rated life
- Photo sensor compatible

Ordering Information

Use the Flow chart below to configure the part number. Actual part number may vary due to configuration.

MFHID-WP	Type WP Wall Pack Fixture
	Number of Lamps Req'd 400MH - 1-400w Pulse Start Metal Halide
	Options See Option Sheet
	Body Color Blank - Bronze