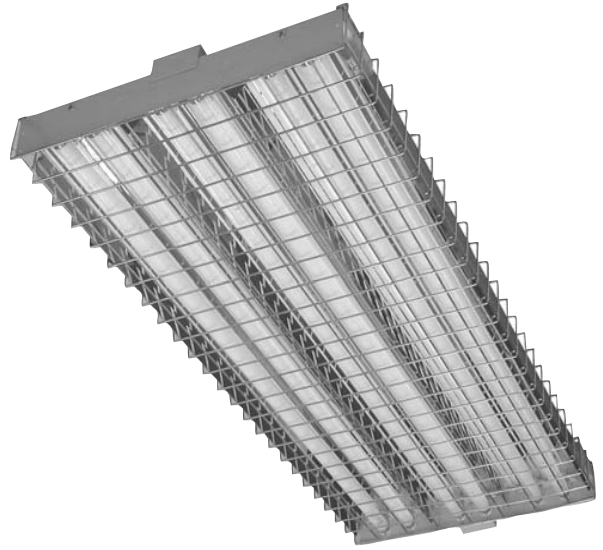


## WIREGUARDS

### BP-WG

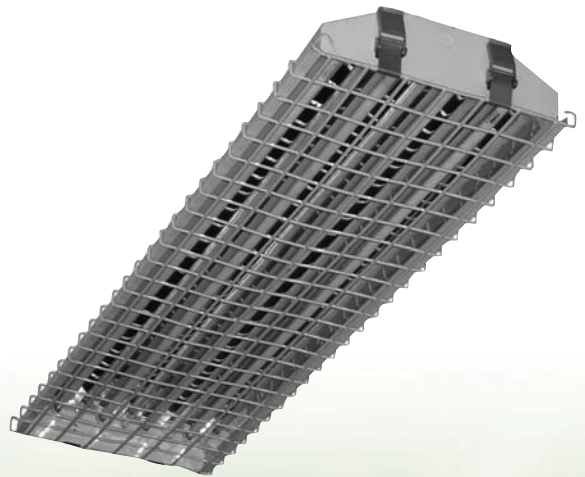
#### Application

All Strip, Wrap, HighBay fluorescent fixtures



#### Construction

- Constructed of tempered steel wire, resistance welded in a rectangular grid pattern with standard lengths of 48".
- Attach to light fixtures using specially designed clips or clamps.
- Hinge from either side.
- Available in standard duty 14 gauge and heavy duty 11 gauge.
- Standard wire spacing IS 2.0" x 2.5"
- Finished in powder coated epoxy and polyester chrome or white. Other custom colors and finishes are available on special order. Coating is moisture and weather resistant.



#### Features

- Wireguards for any style fluorescent fixture or retrofit.
- Available in a variety of finishes and gauges.

#### Ordering Information

Use the Flow chart below to configure the part number. Actual part number may vary due to configuration.

<b>BP-WG</b>	<b>Type</b> <b>WG- WireGuards</b>  Contact factory for correct Part # and fitment
--------------	--